

AMP-HES-RT 5-pin DIN Connector Cable Assembly

See drawing: **AMRT301A** for assembly diagram.

NOTE:

For HDSxS1 & Ex pickups a 4-conductor plus shield cable is required.

For IG06-HD-x pickups a 4-conductor plus shield cable is required.

For HESxS1 pickups a 3-conductor plus shield cable is required.

For VTxx/P & Ex pickups a 3-conductor plus shield cable is required.

<u>HDSxS1 & -Ex:</u>	<u>Color:</u>	<u>VTxx/P & -Ex or HESxS1:</u>	<u>Color:</u>
1 - +Supply 2 (U _b)	[RED]	1 - +Supply (U _b)	[RED]
2 - Out 2	[GREEN]	2 - Out	[WHITE]
3 - common (0V)	[BLACK]	3 - common (0V)	[BLACK]
4 - Out 1	[WHITE]	4 - not used	
5 - +Supply 1 (U _b)	[RED]	5 - not used	

<u>IG06-HD-x:</u>	<u>Color:</u>
1 - common (0V)	[BLACK]
2 - Out A	[WHITE]
3 - not used	
4 - Out B	[GREEN]
5 - +Supply (U _b)	[RED]

Insert one end of the cable through connector parts 1, 2, 3, 4, 5, and 6. Strip insulation and foil back 1 ½". Solder cable leads to pins on connector (8) per instructions above depending on which sensor type the cable is intended for. Cut the shield lead along with any unused leads at the strip line. Make sure that shield lead and any unused leads are insulated from the connector housing.

Install O-ring (10) into groove on insert (9). Line up the keyway and insert connector (8) into insert (9). Line up the keyway and insert support/guide part (7) into insert (9) over connector (8). Insert assembly into housing part (6).

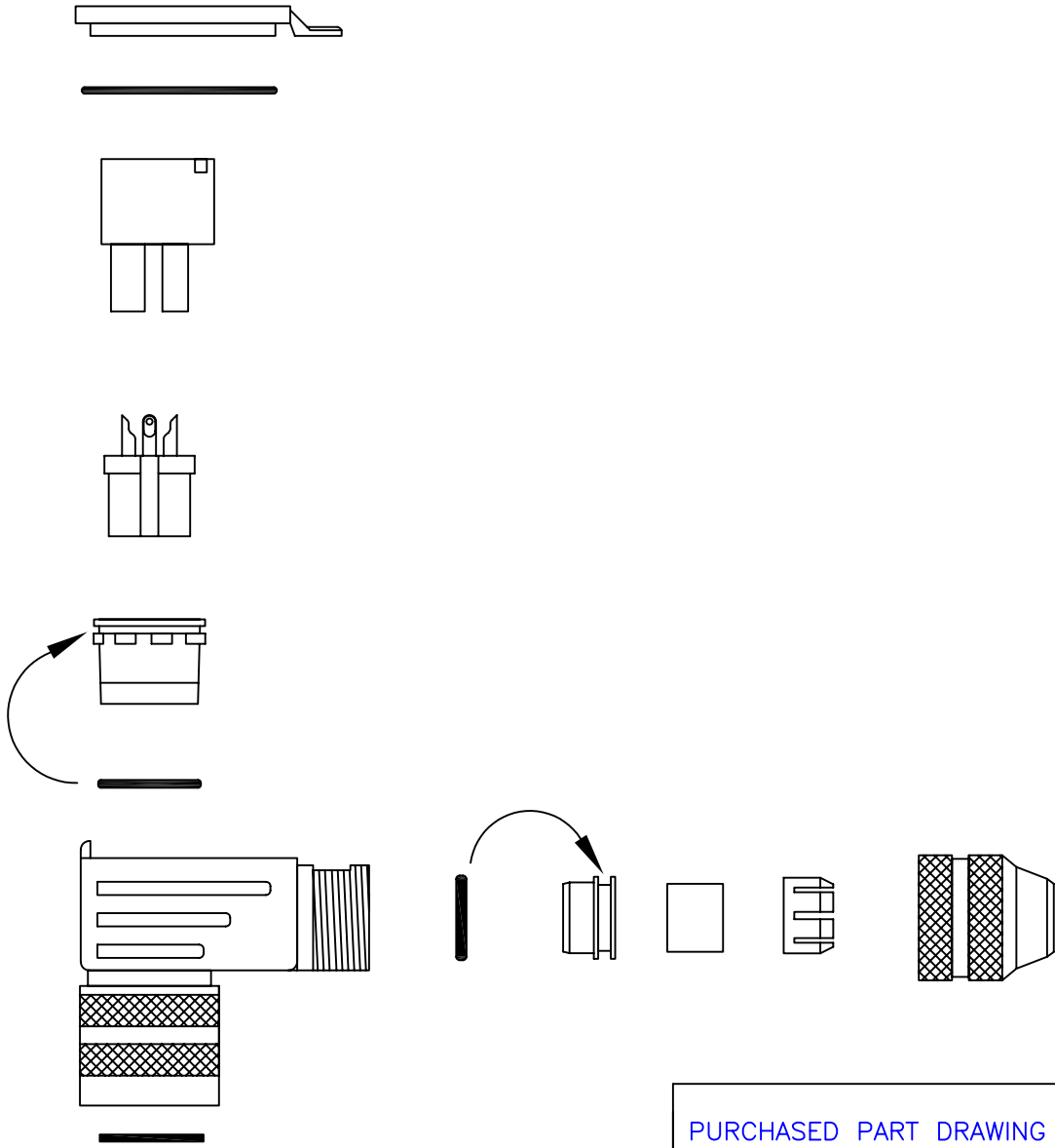
Pull cable back through housing until strip line is just inside of the housing cavity. Dress leads inside the cavity and install rectangular seal (12) and cover (13) on to the housing.

Install O-ring (5) into groove on ferrule (4). Slide ferrule into housing (6). Slide part (2) over seal part (3) and slide up against (4). Thread on the tightening nut (1) until hand tight. Cable should now be sealed and securely relieved of strain. Line up the keyway and slide circular gasket (11) over the end of the connector (8) inside of threaded ring part of housing (6) and push as far in as possible until it "bottoms" in the gap. This gasket will form a seal with the mating connector on the pickup.

Strip insulation and foil from other end of cable back 1 ½". Cut off any lead not used on connector at the insulation trim line. **DO NOT CUT OFF SHIELD LEAD.** Slightly tin the end of the shield lead. Using 22 gauge wire stripper, cut insulation ¼" from end of colored leads but do not remove insulation. Label leads. Perform continuity test on cable to verify proper connection.

AMP-HES-RT CONNECTOR ASSEMBLY

PART# AMP-HES-RT



PURCHASED PART DRAWING

THIS PRINT, INCLUDING THE INFORMATION CONTAINED IN IT, IS THE PROPERTY OF AW-LAKE COMPANY. IT IS CONSIDERED PROPRIETARY IN NATURE AND MAY NOT BE USED OR DISCLOSED OUTSIDE OF AW-LAKE COMPANY, EXCEPT UNDER PRIOR WRITTEN AGREEMENT. ANY MODIFICATIONS MADE TO OR COMMENTS WRITTEN ON THIS DRAWING BY UNAUTHORIZED PERSONNEL WILL VOID THIS DRAWING. ALL DIMENSIONS SHOWN ARE SUBJECT TO CHANGE WITHOUT NOTICE.



2440 W. Corporate Preserve Dr. #600
Oak Creek, WI 53154
Phone: 414.574.4300
Fax: 414.574.4301

TITLE: 5-PIN RIGHT ANGLE CONNECTOR			
DRAWING NUMBER: AMRT300A		PART NUMBER: BZ10006	
DATE: 05-21-03	REV: A	DRAWN BY: SHANE WILSON	
CHECKED BY: S.W.	PAGE 1	OF 1	SCALE: NONE